



PROPERTY
SERVICES

LIMITED



Kitchen Diner

28 Sir Thomas Whites Road , Coventry, CV5 8DQ

£1,295 Per Month



3/4 Bedroom Property Available To Rent In The Popular Chapelfields Area of Coventry.
Great Location For Earlsdon High Street & The City Centre.

The property briefly comprises of the following,

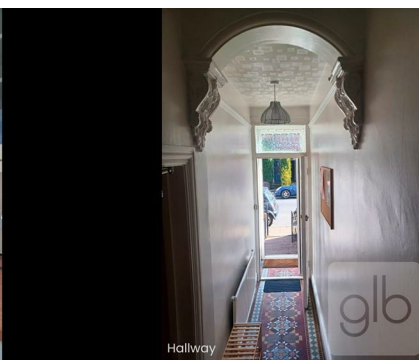
- * Entrance hallway
- * Kitchen with a breakfast bar and all essential appliances
- * Spacious lounge
- * 2nd Reception or 4th ground floor bedroom
- * 3 Bedrooms to the first floor
- * Family bathroom
- * Low maintenance garden to the rear of the property
- * Fully furnished throughout

Available from the 21st July 2026

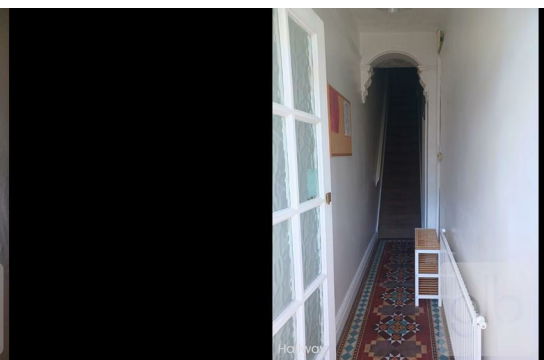
£1,295.00pcm



Kitchen Diner

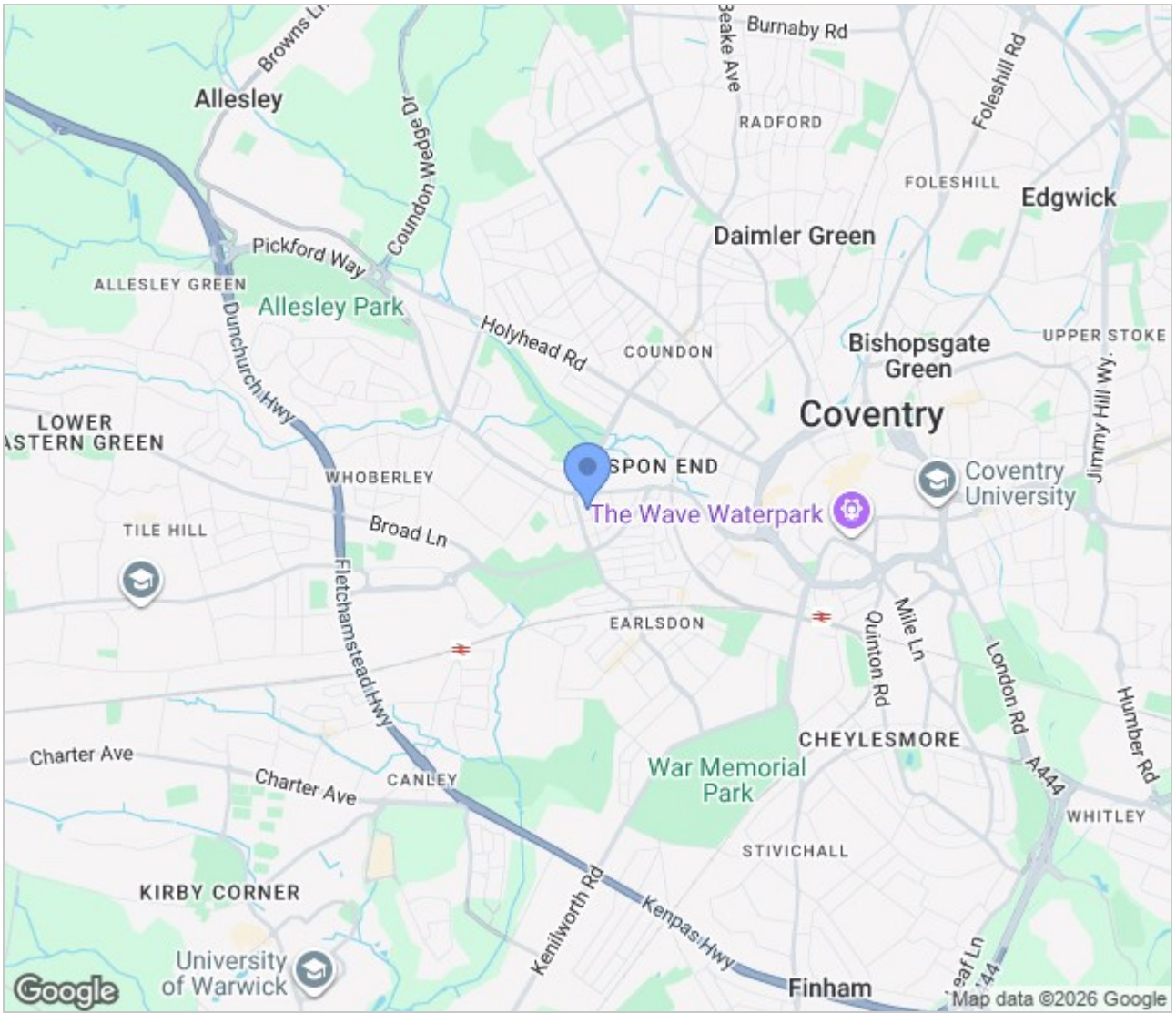


Hallway

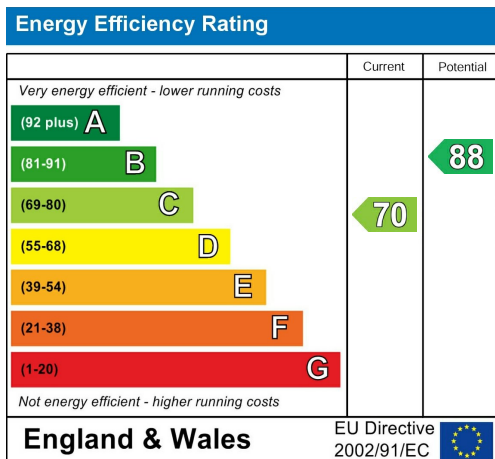


Hallway

Area Map



Energy Efficiency Graph



These particulars, whilst believed to be accurate are set out as a general outline only for guidance and do not constitute any part of an offer or contract. Intending purchasers should not rely on them as statements of representation of fact, but must satisfy themselves by inspection or otherwise as to their accuracy. No person in this firm's employment has the authority to make or give any representation or warranty in respect of the property.

GLB Property Services Ltd
9 Hay Lane
Coventry, CV1 5RJ

T. 02476 433416

info@glbpropertyservices.com
www.glbpropertyservices.com

